



**Kalāheo High School Foundation
and Alumni Association**

Focus on the Learning Environment

**November
2021
School
Edition**

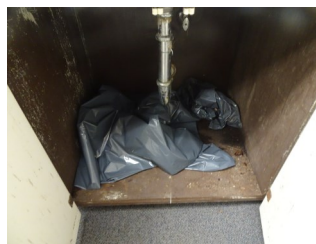
We have all heard the expression “you are what you eat.” Similarly, studies show that students are influenced to feel “you are what your school looks like.” Studies also show that better school grounds and landscape create better behavior, increase focus, and even reduce harmful behavior. Students perform better on exams if they have views of well-maintained outdoor landscape. According to one study, students’ attention increased almost 13% when there was green, natural beauty outside their classroom windows.

A school’s curb appeal matters. A ragged and unkept landscape says to a prospective school parent and others in the community, “If the school doesn't care to take care of its appearance, what else does it not care about?” Well-designed and well-kept curb appeal promotes student pride, and student pride increases focus on learning. *Reference: Landscaping to Improve a Learning Environment | Landcrafters FL*

Current Major Project: Our current focus is on improving the 9/11 Memorial site and surrounding grounds in front of A-Building. The Foundation has engaged landscape architect Steven Mechler for the project design.

Ongoing Projects: Board member volunteers assist with general Kalaheo Library aesthetics and maintenance as well as development of School Archives. Also on the agenda are landscaping projects throughout the campus.

Recent Major Accomplishments: Given the importance of school aesthetics backed up by research and to promote pride of place among students, faculty, and staff, the Kalaheo Foundation has recently focused on improvements to campus landscape as well as indoor spaces. **Below are two completed or almost completed projects.**



H-BUILDING COURTYARD *Objective:* Improve aesthetics, reduce maintenance, repair rusting metal sculpture. *Results:* Removed large /bulky discarded items, weeded, amended soil, planted low maintenance plants, power-washed, contacted State Foundation on Culture & Arts which contracted repairs over six-weeks in summer 2021. *Cost:* The State Foundation funded sculpture repairs and deemed it a “Kalaheo treasure” given its designer Jim Charlton who apprenticed with renowned architect Frank Lloyd Wright. In addition to labor, Foundation Board members funded \$300 in other improvements.

OFFICE LUNCH ROOM *Objective:* Renovate a decades-old room with dirty floors, damaged walls, water-damage, leaky plumbing, roaches, and unsightly refrigerator. *Result:* Surfaces cleaned, new refrigerator, plumbing and walls repaired, new sink and faucet, new cabinetry with granite countertop, walls painted, and donated table and chairs. *Cost:* In addition to many hours of labor by Board members, approximately \$4000 in donations.

Yes! I support the Foundation’s campus improvements, Legacy Scholarships, grants, and Endowment Fund.

Donate online at kalaheofoundation.org. Or send this form and check--payable to Kalaheo High School Foundation--to Kalaheo High School Foundation, 730 Iliaina Street, Kailua, HI 96734

Name: _____ Parent Alumnus Supporter Volunteer
 Address: _____ City: _____ State: _____ Zip: _____
 Phone: _____ E-Mail: _____

The Kalaheo High School Foundation is a 501(c)(3) tax-exempt organization. Your monetary gift is deductible to the fullest extent allowed by law as no goods or services will be provided in whole or in part for this contribution.